

2021

THE  
NORTH  
FACE®



# NEVER STOP EXPLORING®

To protect its reputation and identity, The North Face reserves the right to prohibit the addition to any The North Face garment any trademark name, design or logo of an organization, business, school or team (or for an individual or other entity) that does not meet the high standards of the brand. Please contact your representative with any questions. The decoration of any The North Face garment with a mark, name, design or logo that is obscene, vulgar, advocates or displays violence or illegal activity, and/or relates to the firearms and ammunition, tobacco, sex and pornography industries is expressly prohibited. The North Face products may not be resold without embellishment.

The registered owner of the THE NORTH FACE Trademarks is THE NORTH FACE APPAREL CORP.





**THE NORTH FACE MAINTAINS AN  
UNWAVERING COMMITMENT TO PUSHING  
THE LIMITS OF INNOVATION AND DESIGN, SO YOU  
CAN PUSH YOUR LIMITS OUTDOORS.**

**04 INSULATED**

**16 RAINWEAR**

**24 SOFT SHELLS**

**38 FLEECE**

**58 CAPS**

**60 BAGS**



# NEW EVERYDAY INSULATED JACKETS







## ADULT



TNF BLACK

SHADY  
BLUE

BURNT OLIVE  
GREEN

BACK

## LADIES



TNF BLACK

SHADY  
BLUE

VINTAGE  
WHITE

## DETAILS

- 100% recycled polyester taffeta body and lining
- Vision® center front zipper
- Secure-zip hand pockets
- Contrast embroidered The North Face logo on left sleeve and right back shoulder

## FABRIC

50D WindWall™ — 100% recycled polyester taffeta shell and lining  
Durable water-repellent (DWR) finish

## INSULATION

150 g Heatseeker™ synthetic insulation



DURABLE  
WATER-  
REPELLENT



INSULATED



WIND  
PROTECTION



SYNTHETIC



RECYCLED  
CONTENT

## NEW EVERYDAY INSULATED JACKETS

Built for mountain and city life, this jacket has fashionable baffles and colorblocking. Designed for everyday use, it will keep you warm and dry when it gets cold and wet.

### EVERYDAY INSULATED JACKET

**NF0A529K** \$139.00 (R)

ADULT SIZES: S–3XL

### LADIES EVERYDAY INSULATED JACKET

**NF0A529L** \$139.00 (R)

LADIES SIZES: S–2XL



# NEW EVERYDAY INSULATED VESTS





## ADULT



TNF BLACK

SHADY  
BLUE

BURNT OLIVE  
GREEN

BACK

## LADIES



VINTAGE  
WHITE

TNF BLACK



### DETAILS

- 100% recycled polyester taffeta body and lining
- Vislon® center front zipper
- Secure-zip hand pockets
- Contrast embroidered The North Face logo on left hem and right back shoulder

### FABRIC

50D WindWall™ — 100% recycled polyester taffeta shell and lining  
Durable water-repellent (DWR) finish

### INSULATION

150 g Heatseeker™ synthetic insulation



DURABLE  
WATER-  
REPELLENT



WIND  
PROTECTION



SYNTHETIC



RECYCLED  
CONTENT



INSULATED

### NEW EVERYDAY INSULATED VESTS

Classic baffles and colorblocking make this flexible, chill-fighting vest a must-have for everyday excursions.

#### EVERYDAY INSULATED VEST

**NF0A529A** \$109.00 (R)

ADULT SIZES: S–3XL

#### LADIES EVERYDAY INSULATED VEST

**NF0A529Q** \$109.00 (R)

LADIES SIZES: S–2XL



# THERMOBALL TREKKER JACKETS

The North Face® developed a partnership with PrimaLoft® to offer a new synthetic alternative to down. ThermoBall™ is a revolution in insulation technology. Unlike traditional, continuous-filament synthetic insulations, the small round PrimaLoft® synthetic fiber clusters closely mimic down clusters; trapping heat within small air pockets to retain warmth.

Independent testing has shown that ThermoBall™ technology can offer the low weight, loft, warmth and compressibility of down with the wet- weather insulating performance of synthetics with the warmth equivalent of 600 fill down.

**THERMOBALL™**  
POWERED BY  
**PRIMALOFT®**



## ADULT



## LADIES





## THERMOBALL™ TREKKER JACKETS

Designed with baffles contoured to fit your body, this streamlined jacket offers lightweight, highly compressible ThermoBall™ powered by PrimaLoft® synthetic insulation. Excellent at retaining loft and warmth even when wet, the ThermoBall™ Trekker Jacket will keep you warmer regardless of the conditions.

### THERMOBALL™ TREKKER JACKET

NF0A3LH2 \$199.00 (R)

ADULT SIZES: S-3XL

### LADIES THERMOBALL™ TREKKER JACKET

NF0A3LHK \$199.00 (R)

LADIES SIZES: S-2XL

## DETAILS

- Interior left chest zippered pocket
- Interior elastic cuffs
- Secure-zip hand pockets
- Stows in left hand pocket
- Hem cinch-cord
- Contrast embroidered The North Face logo on left chest and right back shoulder

## FABRIC

15D 33 g/m<sup>2</sup> 100% nylon  
Durable water-repellent (DWR) finish

## INSULATION

11.5 g/ft<sup>2</sup> PrimaLoft® ThermoBall™  
synthetic insulation



DURABLE  
WATER-  
REPELLENT



INSULATED



PACKABLE/  
STOWABLE

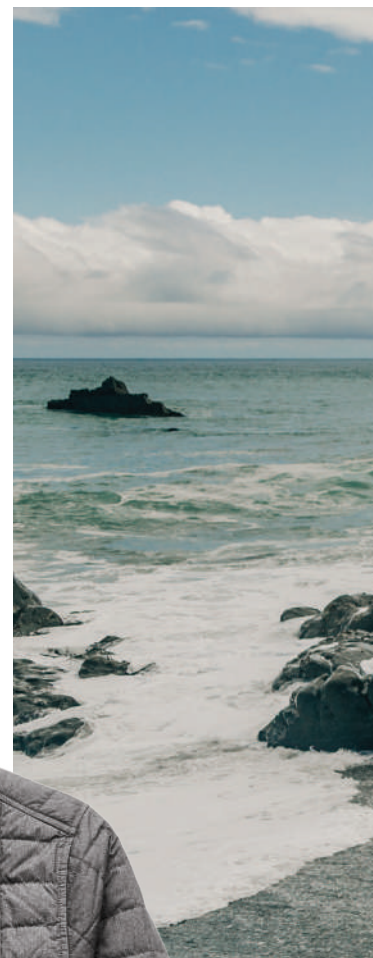


SYNTHETIC





# THERMOBALL ECO SHIRT JACKET & TREKKER VESTS



## DETAILS

- Snap front closure
- Chambray trim on collar and cuffs
- Snap cuffs
- Reverse-entry welt left chest pocket
- Woven The North Face logo label on chest pocket
- Traditional shirt hem

## FABRIC

100% nylon plain woven  
WindWall™ durable water-repellent (DWR) finish

## INSULATION

9.5 g/ft² PrimaLoft® ThermoBall™  
ECO synthetic insulation

## LINING

100% nylon ripstop



DURABLE  
WATER-  
REPELLENT



INSULATED



RECYCLED  
CONTENT



SYNTHETIC



TNF BLACK

MID GREY

## THERMOBALL™ ECO SHIRT JACKET

Get streamlined layering without extra bulk or weight. This quilted shirt jacket that is insulated with ThermoBall™ ECO for warmth. The chambray trim adds an unexpected casual touch to this limitless jacket that easily transitions from the indoors to the damp outdoors with its DWR finish.

**NF0A47FK** \$149.00 (R)

ADULT SIZES: S-3XL





## DETAILS

- Secure-zip hand pockets
- Stows in left hand pocket
- Hem cinch-cord
- Contrast embroidered The North Face logo on left hem and right back shoulder

## FABRIC

15D 33 g/m<sup>2</sup> 100% nylon  
Durable water-repellent (DWR) finish

## INSULATION

11.5 g/ft<sup>2</sup> PrimaLoft® ThermoBall™  
synthetic insulation



DURABLE  
WATER-  
REPELLENT



INSULATED



PACKABLE/  
STOWABLE



SYNTHETIC



## THERMOBALL™ TREKKER VESTS

Streamlined ThermoBall™ powered by PrimaLoft® baffles are contoured to fit your body and maintain core warmth during winter excursions in cold, wet weather. Wear this thermal vest as a mid-layer for added warmth in the coldest winter days or pack it for emergency layering in the backcountry.

### THERMOBALL™ TREKKER VEST

NF0A3LHD \$149.00 (R)

ADULT SIZES: S-3XL

### LADIES THERMOBALL™ TREKKER VEST

NF0A3LHL \$149.00 (R)

LADIES SIZES: S-2XL

## ADULT



TNF BLACK

MID GREY

BACK

## LADIES



TNF BLACK

MID GREY



# TRAVERSE TRICLIMATE 3-IN-1 JACKET

## DETAILS

- Waterproof, breathable DryVent™ shell
- Heatseeker™ synthetic insulation in the removable liner jacket provides additional warmth
- Detachable, adjustable hood with laminated brim
- Stand collar
- Storm flap with Velcro® closure covers front zipper
- Adjustable Velcro® tab cuffs
- Secure-zip hand pockets
- Contrast embroidered The North Face logo at left sleeve (shell and inner jacket) and right back shoulder (shell)
- Contrast embroidered DryVent™ logo at left sleeve
- Hem cinch-cord

## FABRIC

**OUTER:** 70D 140 g/m<sup>2</sup> DryVent™ 2.0L—100% nylon  
Durable water-repellent (DWR) finish

**INNER:** 50D 73 g/m<sup>2</sup> 100% recycled polyester taffeta

## INSULATION

100 g Heatseeker™ synthetic insulation



DURABLE  
WATER-  
REPELLENT



INSULATED



SYNTHETIC



WATERPROOF



WIND  
PROTECTION







## ADULT



TNF BLACK/  
TNF BLACK



MONSTER BLUE/  
TNF BLACK



HEATSEEKER™  
INSULATED LINER JACKET

## TRAVERSE TRICLIMATE® 3-IN-1 JACKET

Get versatile outdoor protection with this 3-in-1 jacket that pairs a waterproof, breathable DryVent™ shell with a warm Heatseeker™ insulated liner jacket. Wear both in cold, wet conditions or separately as the weather permits.

**NFOA3VHR** \$250.00 (R)  
ADULT SIZES: S-3XL



# ASCENDENT INSULATED JACKET

## ASCENDENT INSULATED JACKET

Stay warm, dry and carefree on the slopes or in the city in this waterproof, insulated jacket that's built with storm-shedding DryVent™ and Heatseeker™ technical fabrics.

**NF0A3SES** \$225.00 (R)

ADULT SIZES: S-3XL

## DRYVENT™

DryVent™ styles are engineered to be fully waterproof, windproof and breathable.

The outer face is treated with a durable water-repellant finish that helps form droplets and repels water from the surface.

Each multi-layered style is engineered to allow water vapor to pass through from the inside to the outside.

DryVent™ fabrics are engineered in a variety of weights, textures and performance characteristics to allow for your maximum protection, performance and comfort.

All DryVent™ clothing is fully seam-sealed and designed with specific features that are relevant to your specific activity needs and conditions.







## DETAILS

- Technical, weatherproof jacket with a classic cut
- Waterproof, breathable DryVent™ shell
- Heatseeker™ synthetic insulation provides additional warmth
- AquaGuard® waterproof zippers
- Interior stash pocket
- Secure-zip left chest pocket
- Adjustable Velcro® tab cuffs
- Hem cinch-cord
- Contains at least 50% recycled content by weight
- Contrast, raised, high-definition The North Face logo at left chest and right back shoulder

## FABRIC

75D 133g/m<sup>2</sup> DryVent™ 2.0L—100% recycled polyester

## INSULATION

100 g (body), 80 g (sleeves),  
60 g (collar) Heatseeker™ synthetic insulation



WATERPROOF



BREATHABLE



SYNTHETIC



INSULATED



WIND  
PROTECTION

## ADULT



ASPHALT GREY/  
TNF BLACK

TNF BLACK/  
ASPHALT GREY



# APEX DRYVENT JACKETS

## APEX DRYVENT™ JACKETS

Stay protected while out in the elements in this waterproof, breathable, technical jacket. The stretch-woven face and lightweight stretch-knit backer provide breathable protection, while the 100% windproof fabric shields you from the wind.

### APEX DRYVENT™ JACKET

NF0A47FI \$210.00 (R)

ADULT SIZES: S-3XL

### LADIES APEX DRYVENT™ JACKET

NF0A47FJ \$210.00 (R)

LADIES SIZES: S-2XL







## DETAILS

- Waterproof, breathable, seam-sealed DryVent™ 3L shell
- 100% windproof fabric
- Stretch-woven face and stretch-knit backer
- Attached, fully adjustable hood
- Tonal drawcords
- Storm flap with snap closure covers front zipper
- Covered, secure-zip hand pockets
- Adjustable Velcro® tab cuffs
- Slight drop tail hem (Ladies)
- High-density The North Face logo heat transfer on left chest and right back shoulder

## FABRIC

**SOLID:** 75D 292 g/m<sup>2</sup> DryVent™ 3L—93/7 polyester/elastane  
Durable water-repellent (DWR) finish

**HEATHER:** 100D 295 g/m<sup>2</sup> DryVent™ 3L—95/5 polyester/elastane  
Durable water-repellent (DWR) finish



## ADULT



TNF BLACK

TNF DARK GREY  
HEATHER

URBAN NAVY

BACK

## LADIES



TNF BLACK

TNF DARK GREY  
HEATHER

URBAN NAVY



# NEW CITY PARKA & TRENCH

## DETAILS

- Technical, weatherproof, seam-sealed trench
- Waterproof, breathable DryVent™ shell
- 100% recycled polyester lining
- Storm flap with Velcro® closure covers front zipper
- Interior media pocket at right chest
- 3-piece hood
- Attached, stowable hood (Ladies)
- Zippered hand pockets
- Adjustable Velcro® cuffs (Adult)
- Shaped open cuffs (Ladies)
- Contrast embroidered DryVent™ logo at left cuff
- Mesh venting and classic design lines at back (Adult)
- Adjustable side tabs at waist, for a flattering fit (Ladies)
- Contrast embroidered The North Face logo on left sleeve and right back shoulder

## FABRIC

75D 116 g/m<sup>2</sup> DryVent™—100% polyester  
Durable water-repellent (DWR) finish  
50D 116g/m<sup>2</sup> 100% recycled polyester lining



RECYCLED  
CONTENT



WIND  
PROTECTION



WATERPROOF



TNF BLACK

## NEW CITY PARKA AND TRENCH

Designed to transition between polished looks and casual style, this parka and trench are the waterproof, seam-sealed and windproof answer to your daily commute.

A recycled polyester lining helps reduce environmental impact.

### CITY PARKA

**NF0A529P** \$180.00 (R)

ADULT SIZES: S–3XL

### LADIES CITY TRENCH

**NF0A529O** \$180.00 (R)

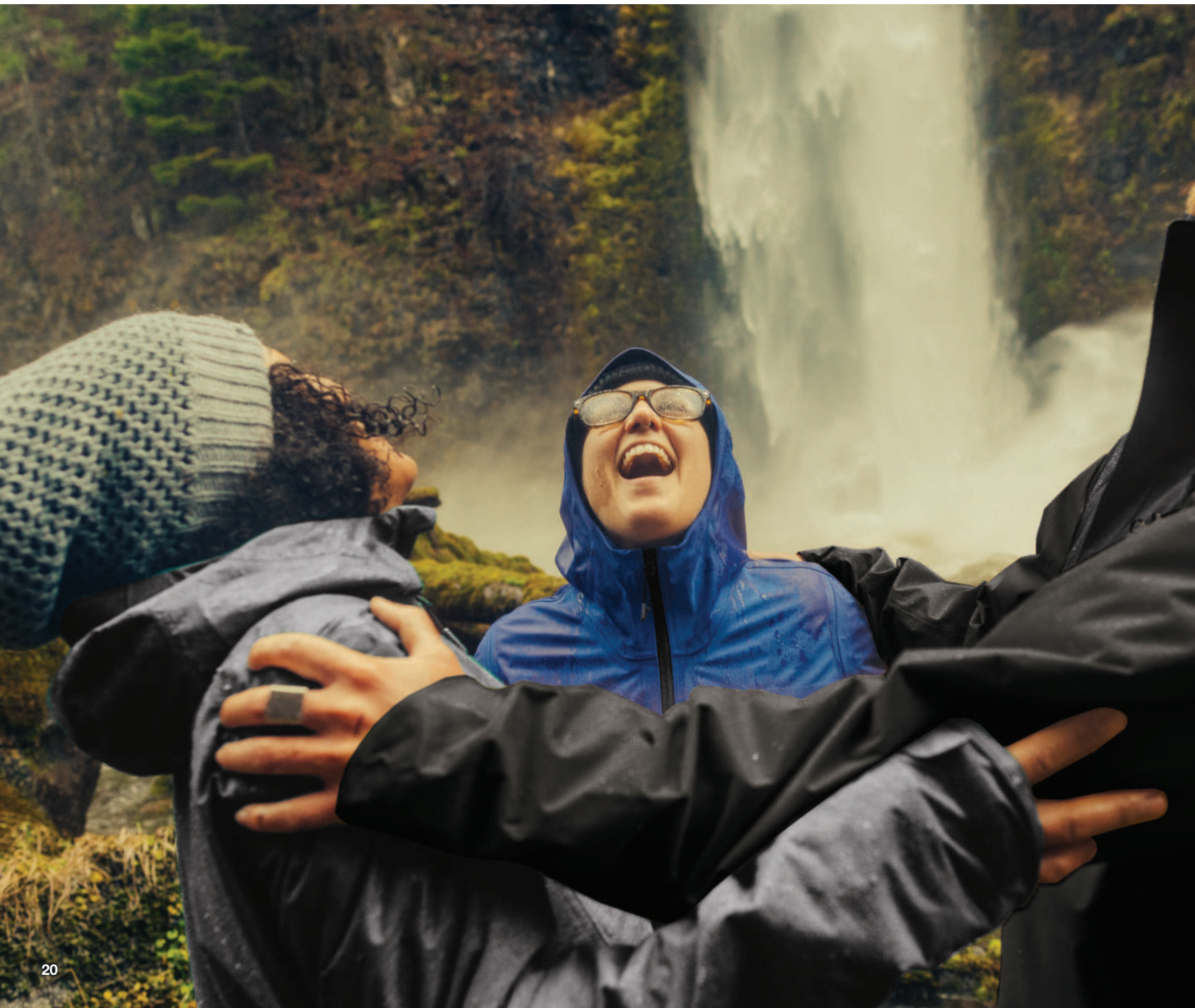
LADIES SIZES: S–2XL







# ALL-WEATHER DRYVENT STRETCH JACKETS





## ADULT



TNF BLACK

ASPHALT GREY

TNF BLUE

URBAN NAVY

## LADIES



TNF BLACK

ASPHALT GREY

TNF BLUE

URBAN NAVY

### ALL-WEATHER DRYVENT™ STRETCH JACKETS

Exceptionally soft and comfortable, this sophisticated jacket is not your average rain jacket. Regardless of the weather, you can keep moving with the mechanical stretch fabric. This hooded shell is fully seam-sealed and crafted from waterproof, windproof DryVent™ fabric.

#### ALL-WEATHER DRYVENT™ STRETCH JACKET

NF0A47FG \$125.00 (R)

ADULT SIZES: S–3XL

#### LADIES ALL-WEATHER DRYVENT™ STRETCH JACKET

NF0A47FH \$125.00 (R)

LADIES SIZES: S–2XL



### DETAILS

- Waterproof, breathable, seam-sealed DryVent™ 2.5L stretch shell
- 100% windproof fabric
- Attached, fully adjustable hood
- Reverse-coil center front zipper with interior draft flap
- Exposed zippered hand pockets (Adult)
- Covered zippered hand pockets (Ladies)
- Adjustable Velcro® tab cuffs
- Hem cinch-cord
- Slight drop tail hem (Ladies)
- High-density The North Face logo heat transfer on left sleeve and right back shoulder

### FABRIC

113 g/m² DryVent™—100% polyester with stretch  
Durable water-repellent (DWR) finish



DURABLE  
WATER-  
REPELLENT



WATERPROOF



STRETCH



WIND  
PROTECTION



# DRYVENT RAIN JACKETS

## DETAILS

- Waterproof, breathable, seam-sealed DryVent™ 2.5L shell
- 100% windproof fabric
- Attached, fully adjustable hood
- Storm flap with Velcro® closure covers front zipper
- Pit-zip venting
- Covered, secure-zip hand pockets
- Stows in left hand pocket
- Adjustable Velcro® tab cuffs
- Hem cinch-cord
- Contrast embroidered The North Face logo on left chest and right back shoulder
- Contrast DryVent™ logo embroidered on left sleeve

## FABRIC

**SOLID:** 40D 85 g/m² DryVent™  
2.5L—100% nylon ripstop

**HEATHER:** 70D 161 g/m² DryVent™  
2.0L—62/38 nylon/polyester



WATERPROOF



PACKABLE/  
STOWABLE



WIND  
PROTECTION



## DRYVENT™ RAIN JACKETS

Made with an environmentally friendly membrane, this waterproof, breathable, technical jacket lets you explore the trails without getting soaked. Plus, its 100% windproof fabric blocks the gusts, while pit zips and an adjustable hood customize ventilation.

### DRYVENT™ RAIN JACKET

**NFOA3LH4** \$105.00 (R)

ADULT SIZES: S–3XL

### LADIES DRYVENT™ RAIN JACKET

**NFOA3LH5** \$105.00 (R)

LADIES SIZES: S–2XL





## ADULT



## LADIES





# NEW CASTLE ROCK HOODED SOFT SHELL JACKET

## DETAILS

- Highly wind-resistant with wind permeability at less than 10 CFM (0 CFM is 100% windproof)
- Attached, fully adjustable hood
- Brushed interior
- Durable water-repellent (DWR) finish
- Reverse-coil center front zipper and hand pockets
- Hem cinch-cord
- Embroidered The North Face logo on left sleeve and right back shoulder

## FABRIC

246 g/m<sup>2</sup> WindWall™—100% polyester  
Durable water-repellent (DWR) finish



DURABLE  
WATER-  
REPELLENT



WIND  
PROTECTION

## NEW CASTLE ROCK HOODED SOFT SHELL JACKET

Sporty and functional without sacrificing durability and versatility, this weather- and abrasion-resistant soft shell has a hood and the protection only The North Face can deliver.

**NF0A529R** \$135.00 (R)

ADULT SIZES: S–3XL

## ADULT



TNF YELLOW

BLUE WING

ASPHALT GREY

TNF BLACK









# NEW CASTLE ROCK SOFT SHELL JACKETS

## **NEW CASTLE ROCK SOFT SHELL JACKETS**

Designed for all-around performance, this sporty soft shell jacket is water-repellent and offers wind-resistant protection from the elements.

### **CASTLE ROCK SOFT SHELL JACKET**

**NF0A552Z** \$120.00 (R)

ADULT SIZES: S-3XL

### **LADIES CASTLE ROCK SOFT SHELL JACKET**

**NF0A5541** \$120.00 (R)

LADIES SIZES: S-2XL







## DETAILS

- Highly wind-resistant with wind permeability at less than 10 CFM (0 CFM is 100% windproof)
- Brushed interior
- Durable water-repellent (DWR) finish
- Reverse-coil center front zipper and hand pockets
- Hem cinch-cord
- Embroidered The North Face logo on left sleeve and right back shoulder

## FABRIC

246 g/m<sup>2</sup> WindWall™ —100% polyester  
Durable water-repellent (DWR) finish



DURABLE  
WATER-  
REPELLENT



WIND  
PROTECTION

## ADULT



MID GREY

ASPHALT GREY

TNF BLACK

BLUE WING

## LADIES



MID GREY

ASPHALT GREY

TNF BLACK

BLUE WING



# NEW CASTLE ROCK SOFT SHELL VESTS

## DETAILS

- Highly wind-resistant with wind permeability at less than 10 CFM (0 CFM is 100% windproof)
- Brushed interior
- Durable water-repellent (DWR) finish
- Reverse-coil center front zipper and hand pockets
- Hem cinch-cord
- Embroidered The North Face logo on left hem and right back shoulder

## FABRIC

246 g/m<sup>2</sup> WindWall™—100% polyester  
Durable water-repellent (DWR) finish



## NEW CASTLE ROCK SOFT SHELL VESTS

Whether you're in the wilds of the mountains or around the office, this sporty, technical soft shell vest delivers weather resistance and superior performance.

### CASTLE ROCK SOFT SHELL VEST

**NF0A5542** \$99.00 (R)

ADULT SIZES: S–3XL

### LADIES CASTLE ROCK SOFT SHELL VEST

**NF0A5543** \$99.00 (R)

LADIES SIZES: S–2XL

## ADULT



MID GREY

ASPHALT  
GREY

TNF BLACK

## LADIES



MID GREY

ASPHALT  
GREY

TNF BLACK







# APEX BARRIER SOFT SHELL JACKETS





# WINDWALL™

WindWall™ soft shells are engineered in fully windproof and wind-resistant options. Our fully windproof options are our most protective; virtually waterproof and windproof, they maintain a comfortable level of breathability in colder weather conditions.

Wind-resistant options are the most versatile, enhanced with stretch and reduced external air permeability, both breathable and water-resistant, making them ideal for a wide range of activities and weather conditions.

## ADULT



## LADIES



### APEX BARRIER SOFT SHELL JACKETS

Windproof with plenty of stretch, this iconic heavyweight soft shell offers the ultimate in weather protection. The coveted Apex Barrier Soft Shell stops rain and wind to keep you warm and dry. A brushed fleece interior ensures all-day comfort.

#### APEX BARRIER SOFT SHELL JACKET

**NFOA3LGT** \$155.00 (R)

ADULT SIZES: S–3XL

#### LADIES APEX BARRIER SOFT SHELL JACKET

**NFOA3LGU** \$155.00 (R)

LADIES SIZES: S–2XL

### DETAILS

- 100% windproof fabric with DWR finish
- Reverse-coil center front zipper
- Left chest zip pocket
- Concealed-zip left chest pocket (Ladies)
- Secure-zip hand pockets
- Curved cuff detail for added coverage with an interior, stretch comfort cuff (Ladies)
- Hem cinch-cord
- Contrast, raised, high-definition The North Face logos at left chest and right back shoulder
- Tonal WindWall™ logo embroidered on lower left sleeve

### FABRIC

**SOLID:** 351 g/m² WindWall™ — 96/4 polyester/elastane soft shell  
Durable water-repellent (DWR) finish

**HEATHER:** 374 g/m² WindWall™ — 100% polyester  
Durable water-repellent (DWR) finish





# RIDGEWALL SOFT SHELL JACKETS

## DETAILS

- Highly wind-resistant with wind permeability at less than 10 CFM (0 CFM is 100% windproof)
- Brushed micro-gridded fleece interior
- Durable water-repellent (DWR) finish
- Reverse-coil center front zipper and hand pockets
- Hem cinch-cord
- Embroidered The North Face logo on left sleeve and right back shoulder

## FABRIC

**SOLID:** 306 g/m<sup>2</sup> WindWall™—100% polyester  
Durable water-repellent (DWR) finish

**HEATHER:** 316 g/m<sup>2</sup>  
WindWall™—100% polyester  
Durable water-repellent (DWR) finish



DURABLE  
WATER-  
REPELLENT



WIND  
PROTECTION



## LADIES



TNF BLACK

TNF DARK  
GREY  
HEATHER

BLACKBERRY  
WINE

## ADULT



TNF BLACK

TNF DARK  
GREY  
HEATHER

ASPHALT GREY/  
TNF BLACK

URBAN NAVY  
HEATHER

SHADY BLUE

BACK



# WINDWALL™



## RIDGEWALL SOFT SHELL JACKETS

Constructed of an abrasion- and wind-resistant outer shell with a warm, technical gridded fleece interior, the RidgeWall is the ultimate mid-weight option for active outdoor adventures.

### RIDGEWALL SOFT SHELL JACKET

**NF0A3LGX** \$105.00 (R)

ADULT SIZES: S-3XL

### LADIES RIDGEWALL SOFT SHELL JACKET

**NF0A3LGY** \$105.00 (R)

LADIES SIZES: S-2XL



# RIDGEWALL SOFT SHELL VESTS

## DETAILS

- Highly wind-resistant with wind permeability at less than 10 CFM (0 CFM is 100% windproof)
- Brushed micro-gridded fleece interior
- Durable water-repellent (DWR) finish
- Reverse-coil center front zipper and hand pockets
- Hem cinch-cord
- Embroidered The North Face logo on left hem and right back shoulder

## FABRIC

**SOLID:** 306 g/m<sup>2</sup> WindWall™—100% polyester  
Durable water-repellent (DWR) finish

**HEATHER:** 316 g/m<sup>2</sup>  
WindWall™—100% polyester  
Durable water-repellent (DWR) finish



## ADULT



TNF BLACK

TNF DARK GREY  
HEATHER

BACK

## LADIES



TNF BLACK

TNF DARK GREY  
HEATHER

## RIDGEWALL SOFT SHELL VESTS

Cover your core without restricting mobility in this abrasion- and wind-resistant vest that has a warm, technical gridded fleece interior for additional comfort.

### RIDGEWALL SOFT SHELL VEST

**NF0A3LGZ** \$85.00 (R)

ADULT SIZES: S–3XL

### LADIES RIDGEWALL SOFT SHELL VEST

**NF0A3LH1** \$85.00 (R)

LADIES SIZES: S–2XL





**WINDWALL™**



# TECH STRETCH SOFT SHELL JACKETS

## TECH STRETCH SOFT SHELL JACKETS

For hiking, biking or commuting, the Tech Stretch Soft Shell Jacket is a weather-protective, breathable layer with four-way stretch for ease of movement. Constructed of 50% recycled polyester, this all-season, double-weave, versatile jacket promotes sustainability.

### TECH STRETCH SOFT SHELL JACKET

**NF0A3LGV** \$105.00 (R)

ADULT SIZES: S-3XL

### LADIES TECH STRETCH SOFT SHELL JACKET

**NF0A3LGW** \$105.00 (R)

LADIES SIZES: S-2XL



## ADULT



## LADIES







## DETAILS

- Highly wind-resistant with wind permeability at less than 10 CFM (0 CFM is 100% windproof)
- Reverse-coil center front zipper
- Secure-zip right chest pocket (Adult)
- Secure-zip hand pockets
- Elastic-bound cuffs for comfort (Adult)
- Curved cuff details for added protection (Ladies)
- Drop tail hem
- Contrast embroidered The North Face logo on left sleeve and right back shoulder (Adult)
- High-density The North Face logo heat transfer on left hem and right back shoulder (Ladies)
- Tonal WindWall™ logo embroidered on left sleeve

## FABRIC

**SOLID:** 285 g/m<sup>2</sup>

WindWall™—50/42/8 recycled polyester/polyester/elastane double weave

Durable water-repellent (DWR) finish

**HEATHER:** 285 g/m<sup>2</sup>

WindWall™—50/45/5 recycled polyester/polyester/elastane double weave

Durable water-repellent (DWR) finish





# HIGH LOFT FLEECE

## HIGH LOFT FLEECE

With plush comfort and warmth, this versatile, super soft fleece works just as well in mild conditions as it does as a mid-layer in colder climates.

**HIGH LOFT FLEECE**  
**NF0A47F8** \$95.00 (R)  
ADULT SIZES: S-3XL

**LADIES HIGH LOFT FLEECE**  
**NF0A47F9** \$95.00 (R)  
LADIES SIZES: S-2XL



## DETAILS

- High-loft fleece
- Stand-up collar
- Stretch binding at cuffs and pockets
- Stretch binding at hem (Ladies)
- Zippered pockets (Ladies)
- Bomber silhouette with flattering design lines (Ladies)
- Contrast embroidered The North Face logo on left sleeve and right back shoulder

## FABRIC

260 g/m<sup>2</sup> 100% polyester knit

## ADULT



TNF BLACK

BACK

## LADIES



VINTAGE  
WHITE

TNF BLACK



# FAR NORTH FLEECE JACKET

## FAR NORTH FLEECE JACKET

Combining breathable mid-weight fleece with durable WindWall™ stretch overlays, this travel-friendly jacket lets you explore new trails in comfort.

**NF0A3LH6** \$135.00 (R)

ADULT SIZES: S-3XL

### DETAILS

- Smooth-faced fleece with stretch fabric overlays
- Heathered mid-weight fleece
- Reverse-coil center front zipper and hand pockets
- Secure-zip left chest pocket
- Hem cinch-cord
- Contrast embroidered The North Face logo on left chest pocket and right back shoulder

### FABRIC

**BODY:** 265 g/m<sup>2</sup> 100% polyester smooth-faced fleece

**OVERLAYS:** 99 g/m<sup>2</sup> WindWall™ 88/12 polyester/elastane stretch woven on upper back and chest



BREATHABLE



WIND PROTECTION



TNF BLACK HEATHER



BACK





# SWEATER FLEECE JACKETS & VEST



## SWEATER FLEECE JACKETS

A soft, heathered tone adds casual appeal to the heavyweight, sweater-knit fleece jacket that's warm, yet breathable, on the trails.

### SWEATER FLEECE JACKET

**NF0A3LH7** \$95.00 (R)

ADULT SIZES: S-3XL

### LADIES SWEATER FLEECE JACKET

**NF0A3LH8** \$95.00 (R)

LADIES SIZES: S-2XL





## SWEATER FLEECE VEST

Stay warm on cool-weather days with this heavyweight, sweater-knit fleece vest that easily transitions from the trails to town.

**NF0A47FA** \$85.00 (R)

ADULT SIZES: S-3XL

### ADULT



TNF BLACK  
HEATHER

TNF MEDIUM  
GREY  
HEATHER

URBAN NAVY  
HEATHER

### DETAILS

- Sweater-knit fleece with a brushed interior for comfort
- Reverse-coil center front zipper and hand pockets
- Secure-zip left chest pocket (Adult Jacket)
- Contrast embroidered The North Face logo on left chest (Jacket)
- Contrast embroidered The North Face logo at left hem (Vest)
- Stylish stitching details on lower sleeves (Ladies)

### FABRIC

300 g/m<sup>2</sup> 100% polyester sweater knit with brushed fleece interior



### ADULT



TNF BLACK  
HEATHER

TNF MEDIUM  
GREY  
HEATHER

URBAN NAVY  
HEATHER

TAUPE GREEN  
HEATHER

### LADIES



TNF BLACK  
HEATHER

TNF MEDIUM  
GREY  
HEATHER



# SKYLINE FLEECE JACKETS

ADULT



TNF BLACK

TNF DARK GREY  
HEATHER

URBAN NAVY  
HEATHER



## SKYLINE 1/2-ZIP FLEECE JACKET

A soft, warm layer that doesn't sacrifice mobility. The smooth-face fleece provides plenty of stretch so you can stay active wherever your day takes you.

**NF0A47F7** \$75.00 (R)  
ADULT SIZES: S-3XL







## SKYLINE FULL-ZIP FLEECE JACKETS

With technical stretch fleece that's soft to the touch, this jacket will keep you warm and comfortable whether you're heading out on the trail or hitting the pavement downtown.

### SKYLINE FULL-ZIP FLEECE JACKET

**NF0A47F5** \$85.00 (R)

ADULT SIZES: S-3XL

### LADIES SKYLINE FULL-ZIP FLEECE JACKET

**NF0A47F6** \$85.00 (R)

LADIES SIZES: S-2XL



### DETAILS

- Stretch, peached-face fleece with a brushed interior for comfort
- Organic hand feel
- Vision® center zipper
- Reverse-coil zippered chest and hand pockets
- Micro-elastic binding at hem
- High-density The North Face logo heat transfer on left chest

### FABRIC

225 g/m<sup>2</sup> 96/4 polyester/elastane with peached, brushed back



STRETCH



BREATHABLE

### ADULT



TNF BLACK

TNF DARK GREY  
HEATHER

URBAN NAVY  
HEATHER

FOUR LEAF  
CLOVER  
HEATHER

ZION ORANGE  
HEATHER

BACK

### LADIES



TNF BLACK

TNF DARK GREY  
HEATHER

AZTEC BLUE

URBAN NAVY  
HEATHER

FOUR LEAF  
CLOVER  
HEATHER

Prices (R) apply to sizes S-XL and are subject to change. Please inquire for pricing on larger sizes.



# MOUNTAIN PEAKS FLEECE JACKETS

## DETAILS

- Stretch fleece with a brushed grid interior for comfort and warmth
- Squared collar
- Raglan sleeves for extra mobility
- Thumbholes (Ladies)
- Reverse-coil center front zipper
- Reverse-coil pocket zippers
- Woven pocket at left sleeve
- High-density The North Face logo heat transfer on left sleeve pocket and right back shoulder

## FABRIC

**BODY:** 216 g/m<sup>2</sup> 95/5 polyester/  
elastane knit fleece

**POCKET:** 216 g/m<sup>2</sup> 86/14 polyester/  
elastane knit fleece  
Durable water-repellent (DWR) finish



STRETCH



BREATHABLE



## ADULT



TNF BLACK

ASPHALT GREY

URBAN NAVY

BACK

## LADIES



TNF BLACK

ASPHALT GREY

URBAN NAVY





### **MOUNTAIN PEAKS FULL-ZIP FLEECE JACKETS**

Whether you're out in the wild or exploring a city, this technical base layer is extremely durable and up for the challenge. Its smooth fleece and gridded back deliver warmth and breathability.

#### **MOUNTAIN PEAKS FULL-ZIP FLEECE JACKET**

**NF0A47FD** \$85.00 (R)

ADULT SIZES: S-3XL

#### **LADIES MOUNTAIN PEAKS FULL-ZIP FLEECE JACKET**

**NF0A47FE** \$85.00 (R)

LADIES SIZES: S-2XL



# MOUNTAIN PEAKS 1/4-ZIP FLEECE

## DETAILS

- Stretch fleece with a brushed grid interior for comfort and warmth
- Squared collar
- Raglan sleeves for extra mobility
- Thumbholes (Ladies)
- Reverse-coil center zipper
- High-density The North Face logo heat transfer on left sleeve and right back shoulder

## FABRIC

216 g/m<sup>2</sup> 95/5 polyester/elastane knit fleece

ADULT



STRETCH



BREATHABLE



## LADIES



TNF BLACK

MID GREY

TNF BLUE

URBAN NAVY

TNF RED

BACK

TNF BLACK



## MOUNTAIN PEAKS 1/4-ZIP FLEECE

For life's best adventures, stay warm in this technical, stretch fleece that's durable and breathable. The gridded back ensures ventilation while the quarter front zipper provides ease and versatility.

### MOUNTAIN PEAKS 1/4-ZIP FLEECE

**NF0A47FB** \$75.00 (R)

ADULT SIZES: S-3XL

### LADIES MOUNTAIN PEAKS 1/4-ZIP FLEECE

**NF0A47FC** \$75.00 (R)

LADIES SIZES: S-2XL



MID GREY

TNF BLUE

URBAN NAVY

TNF RED



# CANYON FLATS FLEECE JACKETS

## CANYON FLATS FLEECE HOODED JACKET

Climbing, biking or hiking in cool weather isn't a problem in this durable, smooth-faced fleece hoodie crafted for warmth.

**NF0A3LHH** \$90.00 (R)

ADULT SIZES: S-3XL



ADULT



TNF BLACK

ASPHALT GREY  
REIGN CAMO  
PRINT





## CANYON FLATS FLEECE JACKET

Protect yourself from the elements at work or play with this sleek, smooth-faced fleece built for rock-solid durability and easy movement.

**NF0A3LH9** \$80.00 (R)

ADULT SIZES: S-3XL



### DETAILS

- Smooth-faced fleece with a brushed interior for comfort
- Vision® center front zipper
- Concealed-zip right chest pocket with welding detail
- Raglan sleeves for extra mobility
- Secure-zip hand pockets
- High-density The North Face logo heat transfer on left sleeve

### FABRIC

243 g/m<sup>2</sup> 100% polyester fleece

Due to different fabric specs, please allow for slight color variations between the Adult Canyon Flats Fleece Jacket and the Ladies Canyon Flats Stretch Fleece Jacket.



BREATHABLE

### ADULT



TNF MEDIUM  
GREY HEATHER

URBAN NAVY  
HEATHER

MONSTER BLUE  
HEATHER

TNF BLACK

Prices (R) apply to sizes S-XL and are subject to change. Please inquire for pricing on larger sizes.



# CANYON FLATS STRETCH

## DETAILS

- Smooth-faced fleece with a brushed interior for comfort
- Contrast, high-density The North Face logo heat transfer at back shoulder
- Mid-weight luxe stretch fleece poncho
- Cowl neck
- Front pouch pocket
- Binding on cuffs and hem
- Split high/low hem for a feminine touch and added coverage

## FABRIC

360 g/m<sup>2</sup> 95/5 polyester/elastane luxe heathered stretch fleece



STRETCH



BREATHABLE



## LADIES CANYON FLATS STRETCH PONCHO

This soft, luxe fleece poncho is sure to keep you warm on those chilly nights at home or outdoors. The cowl neck blocks gusty winds while the front pouch pocket keeps hands warm when temps drop.

**NF0A3SEF** \$99.00 (R)

LADIES SIZES: S-2XL

## LADIES



TNF BLACK HEATHER

HIGH RISE GREY  
HEATHER

BACK





## LADIES CANYON FLATS STRETCH FLEECE JACKET

A great choice for any excursion, this luxuriously plush jacket has plenty of built-in stretch for maximum movement and comfort.

**NF0A3LHA** \$80.00 (R)  
LADIES SIZES: S–2XL

### LADIES



### DETAILS

- Smooth-faced fleece with a brushed interior for comfort
- Reverse-coil center front zipper
- Raglan sleeves for extra mobility
- Mid-weight luxe stretch fleece jacket
- Secure-zip hand pockets
- Contrast, high-density The North Face logo heat transfer on left sleeve

### FABRIC

360 g/m<sup>2</sup> 95/5 polyester/elastane luxe heathered stretch fleece

Due to different fabric specs, please allow for slight color variations between the Ladies Canyon Flats Stretch Fleece Jacket and the Adult Canyon Flats Fleece Jacket.



STRETCH



BREATHABLE





# TECH FLEECE JACKETS

## DETAILS

- Smooth-faced fleece with brushed interior for comfort
- Zip-through cadet collar
- Low-profile, reverse-coil front zipper and zippered hand pockets
- Rib knit cuffs and hem
- Contrast embroidered The North Face logos on left sleeve and right back shoulder

## FABRIC

**BODY:** 235 g/m<sup>2</sup> 100% polyester fleece with soft-brushed interior

**RIB:** 90/10 polyester/elastane 2x2 rib knit



STRETCH



BREATHABLE





## ADULT



TNF BLACK

TNF MEDIUM GREY  
HEATHER/ASPHALT

MID GREY/  
URBAN NAVY

## LADIES



TNF BLACK

TNF MEDIUM  
GREY HEATHER/  
ASPHALT

URBAN NAVY



### TECH FULL-ZIP FLEECE JACKETS

Whether you're tackling your favorite athletic activity or looking for a stylish, lightweight layering option, these jackets have you covered.

#### TECH FULL-ZIP FLEECE JACKET

**NF0A3SEW** \$80.00 (R)

ADULT SIZES: S-3XL

#### LADIES TECH FULL-ZIP FLEECE JACKET

**NF0A3SEV** \$80.00 (R)

LADIES SIZES: S-2XL



# TECH FLEECE

## TECH 1/4-ZIP FLEECE

The perfect layer for spring skiing and early season hikes, this versatile, smooth-faced fleece features a quarter-length zipper that lets you easily regulate temperature.

### TECH 1/4-ZIP FLEECE

**NF0A3LHB** \$60.00 (R)

ADULT SIZES: S-3XL

### LADIES TECH 1/4-ZIP FLEECE

**NF0A3LHC** \$60.00 (R)

LADIES SIZES: S-2XL



## ADULT





DETAILS

- Smooth-faced fleece with brushed interior for comfort
- Hardwearing design with pill-resistance
- Cadet collar
- Modern stitch details on collar (Ladies)
- Reverse-coil quarter zipper for easy venting
- Dries quickly to minimize heat loss
- Contrast The North Face logo on left sleeve

FABRIC

235 g/m² 100% polyester fleece with soft-brushed interior



STRETCH



BREATHABLE



LADIES



Prices (R) apply to sizes S–XL and are subject to change. Please inquire for pricing on larger sizes.



# PULLOVER HOODIE

## DETAILS

- Easy-care mid-weight cotton/poly fabric
- Self-lined, two-piece hood with drawcord
- Set-in sleeves
- Front pouch pocket
- Ribbed cuffs and hem
- The North Face logo heat transfer on left sleeve

## FABRIC

250 g/m<sup>2</sup> 53/47 cotton/polyester knit fleece

## TNF LIGHT GREY HEATHER:

250 g/m<sup>2</sup> 70/30 cotton/polyester knit fleece



STRETCH



BREATHABLE



## PULLOVER HOODIE

Soft and breathable, this cotton-blend pullover will keep you warm whether you're resting between adventures or traveling to your next destination.

**NF0A47FF** \$55.00 (R)

ADULT SIZES: S–3XL

## ADULT



TNF BLACK  
HEATHER

TNF LIGHT  
GREY HEATHER

TNF MEDIUM  
GREY HEATHER

URBAN NAVY  
HEATHER

NEW TAUPE  
GREEN HEATHER







# NEW CAPS



## NEW MOUNTAIN BEANIE

Made of 100% recycled fabric, this beanie is made for snow shoveling or just walking in the woods. A fleece liner adds cozy warmth in cold conditions.

**NF0A4VUB** \$16.00 (R)

ONE SIZE FITS MOST



VINTAGE WHITE

TNF DARK  
GREY  
HEATHER

ASPHALT  
GREY

TNF BLACK

TNF BLUE

BLUE WING

URBAN NAVY

CARDINAL  
RED

BURNT OLIVE  
GREEN

TIMBER TAN

## DETAILS

- Helps reduce landfill waste and the use of virgin materials
- Fleece liner
- Woven The North Face logo label

## FABRIC

50% recycled polyester body, 50% recycled polyester fleece



## NEW CLASSIC CAP

Crafted from 100% recycled fabric for a broken-in look from the start, this classic baseball cap keeps up with your outdoor lifestyle.

**NF0A4VU9** \$18.00 (R)

### DETAILS

- Structured
- Mid profile
- Contrast embroidered The North Face logo on left middle panel
- Woven back label with The North Face logo
- Adjustable self-fabric strap closure

### FABRIC

100% recycled polyester



ASPHALT GREY

MID GREY

TNF BLACK

TNF BLUE

URBAN NAVY

TIMBER TAN



VINTAGE WHITE/  
ASPHALT GREY

TNF MED GREY  
HEATHER/TNF  
BLACK

ASPHALT GREY/  
TNF WHITE

TNF BLACK/  
TNF WHITE

TNF BLACK/  
TNF BLACK

TNF BLUE/  
TNF BLACK

URBAN NAVY/  
TNF WHITE

BURNT OLIVE  
GREEN/ASPHALT  
GREY



## NEW ULTIMATE TRUCKER CAP

Constructed of cotton canvas, this cap has a rugged canvas wash for a vintage look. The adjustable snapback closure allows a customized fit, while mesh venting and eyelets provide breathability and ventilation on the warmest days.

**NF0A4VUA** \$18.00 (R)

### DETAILS

- Structured
- Mid profile
- Washed-down cotton canvas
- Contrast embroidered The North Face logo embroidered on left middle panel
- Adjustable snapback closure

### FABRIC

100% cotton canvas front panels,  
100% polyester mesh back panels



# BAGS





## GENERATOR BACKPACK

Stash your gear quickly and hit the road with this 28-liter backpack that's constructed with a suspension system for all-day comfort. With a laptop sleeve and technical features, this backpack is equally at home on the trail as it is on commutes, campus treks and cross-continental adventures.

**NF0A3KX5** \$93.00 (R)



TNF BLACK



TNF RED/ASPHALT GREY



ZINC GREY HEATHER/  
TNF BLACK



### DETAILS

- Padded, fleece-lined 15" laptop sleeve in main compartment
- The FlexVent™ suspension system boasts custom injection-molded shoulder straps and a padded mesh back panel with a spine channel for maximum support and ventilation
- Padded, fleece-lined tablet sleeve located in the front compartment for quick access
- Front elastic bungee for external storage
- Secondary compartment has internal organization with a fleece-lined media pocket, secure zippered pocket and elastic webbing for cord management
- 360-degree reflective bike-light loop, water bottle tabs and shoulder strap webbing
- External fleece-lined pocket for sunglasses or electronics
- Two stretch-mesh water bottle pockets
- Side compression straps offer the ability to adjust load
- Comfortable, padded top haul handle
- Sternum strap with whistle buckle
- Removable waist belt
- Contrast embroidered The North Face logo on center top

### FABRIC

210D Cordura® nylon mini-ripstop

### DIMENSIONS

**AVERAGE WEIGHT:** 2 lbs. 12.45 oz. (1260 g)

**VOLUME:** 1709 in³ (28 liters)

**LAPTOP SLEEVE:** 12"h x 13"d

**DIMENSIONS:** 19.75"h x 13.5"w x 8.5"d



MEDIA  
COMPATIBLE



FLEXVENT  
BACK PANEL

ENDORSED BY  
THE AMERICAN  
CHIROPRACTIC  
ASSOCIATION (ACA)





## FALL LINE BACKPACK

When headed to work or school, this streamlined 28-liter backpack can carry your must-have laptop and gear. It can also organize and protect other electronics, snacks, water and maybe a fleece—meeting your entire daily carrying needs.

**NF0A3KX7** \$93.00 (R)



TNF BLACK  
HEATHER



COSMIC BLUE/  
ASPHALT GREY



TNF BLACK



### DETAILS

- The FlexVent™ suspension system boasts custom injection-molded shoulder straps and a padded mesh back panel with a spine channel for maximum support and ventilation
- Padded, fleece-lined tablet sleeve located in the main compartment for quick access
- Front stash pocket with stretch side panels for additional volume
- Main compartment has internal organization with a fleece-lined media pocket, secure zippered pocket and elastic webbing for cord management
- Reflective bike-light loop, water bottle tabs and shoulder strap webbing create 360-degrees of reflectivity
- External fleece-lined pocket for sunglasses or electronics
- Two opaque stretch-mesh side pockets
- Comfortable, padded top haul handle
- Sternum strap with whistle buckle
- Removable waist belt
- Contrast embroidered The North Face logo on front

### FABRIC

210D Cordura® nylon mini-ripstop  
16980D ballistic nylon trim

### DIMENSIONS

**AVERAGE WEIGHT:** 2 lbs. 5 oz. (1049 g)

**VOLUME:** 1709 in³ (28 liters)

**LAPTOP SLEEVE:** 12"h x 12.5"d

**DIMENSIONS:** 19.75"h x 12.2"w x 6.75"d





## NEW DYNO BACKPACK

Embark on your next daily adventure or weekend getaway in the woods with this ultraversatile pack that's loaded with pockets, stands on its own for easy accessibility and has a sternum strap with whistle built into the buckle for additional safety.

**NF0A52S7** \$80.00 (R)



TNF BLACK



MID GREY DARK  
HEATHER/TNF BLACK



### DETAILS

- The FlexVent™ suspension system with a flexible yoke built from custom injection-molded shoulder straps, an unbelievably comfortable, padded back panel, and a highly breathable lumbar panel
- Two webbing top handles for convenient opening and perfectly balanced carrying when the pack is by your side
- Pack stands on its own for easy loading and unloading
- Padded and protective 15" laptop sleeve in main compartment
- Huge main compartment holds all the must-haves for a day in the office or on campus
- Updated front compartment offers simplified organization and maintains essential features for storage such as secure-zip pockets, tablet sleeve and key fob
- 360-degree reflectivity enhances visibility while commuting
- Two exterior water bottle pockets
- Exterior stash pocket to accommodate quick-access items like a jacket
- Sternum strap with whistle buckle
- Contrast embroidered The North Face logo on front

### FABRIC

600D 50% recycled polyester with non-PFC durable water-repellent (non-PFC DWR) finish (Solids)  
300D heathered polyester with non-PFC durable water-repellent (non-PFC DWR) finish (Heathers)  
100% recycled trim

### DIMENSIONS

**AVERAGE WEIGHT:** 1 lb. 12 oz. (795 g)

**VOLUME:** 1660 in<sup>3</sup> (27.2 liters)

**LAPTOP SLEEVE:** 11.5"h x 11"d

**DIMENSIONS:** 18"h x 11"w x 8.5"d



MEDIA  
COMPATIBLE



FLEXVENT  
BACK PANEL



ENDORSED BY  
THE AMERICAN  
CHIROPRACTIC  
ASSOCIATION (ACA)



## NEW CRESTONE BACKPACK

With double top handles, a slim profile and a stand up design, this is the ultimate 27.5-liter campus or commuter pack. It features a main compartment with a padded laptop sleeve that's roomy enough to handle books, snacks and other must-haves.

**NF0A52S8** \$70.00 (R)



TNF BLACK

MID GREY DARK  
HEATHER/TNF BLACK

SUMMIT GOLD/  
TNF BLACK

### DETAILS

- The FlexVent™ suspension system with a flexible yoke built from custom injection-molded shoulder straps, an unbelievably comfortable, padded back panel; and a highly breathable lumbar panel
- Two webbing top handles for convenient opening and perfectly balanced carrying when the pack is by your side
- Pack stands on its own for easy loading and unloading
- Padded and protective 15" laptop sleeve in main compartment
- Huge main compartment holds all the must-haves for a day in the office or on campus
- Updated front compartment offers simplified organization and maintains essential features for storage such as secure-zip pockets, tablet sleeve and key fob
- 360-degree reflectivity enhances visibility while commuting
- Two exterior water bottle pockets
- Updated front bungee system for additional, easy-access storage
- Sternum strap with whistle buckle
- Contrast embroidered The North Face logo on front

### FABRIC

600D 50% recycled polyester with non-PFC durable water-repellent (non-PFC DWR) finish (Solids)  
300D heathered polyester with non-PFC durable water-repellent (non-PFC DWR) finish (Heathers)  
100% recycled trim

### DIMENSIONS

**AVERAGE WEIGHT:** 1 lb. 10 oz. (740 g)

**VOLUME:** 1678 in<sup>3</sup> (27.5 liters)

**LAPTOP SLEEVE:** 12.75" h x 11" d

**DIMENSIONS:** 18.13" h x 11" w x 8.25" d



MEDIA  
COMPATIBLE



FLEXVENT  
BACK PANEL



## GROUNDWORK BACKPACK

This iconic 26-liter backpack doesn't play around when it comes to protecting and organizing your gear. With the bungee cords crisscrossing the front of the pack, you can secure additional layers or equipment to keep things always accessible.

**NF0A3KX6** \$68.00 (R)



TNF BLACK



TNF DARK GREY  
HEATHER/CARDINAL RED



RAINY DAY IVORY DARK  
HEATHER/TNF BLACK



MID GREY/ASPHALT GREY



MONSTER BLUE/  
ASPHALT GREY



### DETAILS

- The FlexVent™ suspension system boasts custom injection-molded shoulder straps and a padded mesh back panel with a spine channel for maximum support and ventilation
- Floating padded laptop sleeve in main compartment
- Front elastic bungee for exterior storage
- Two mesh water bottle pockets
- Comfortable, padded top haul handle
- Sternum strap with whistle buckle
- Contrast embroidered The North Face logo on front

### FABRIC

600D polyester, 450D x 300D heather polyester, 600D geo emboss polyester, 1200D polyester

### DIMENSIONS

**AVERAGE WEIGHT:** 2 lbs. 0.1 oz. (910 g)

**VOLUME:** 1587 in³ (26 liters)

**LAPTOP SLEEVE:** 12"h x 14"d

**DIMENSIONS:** 19.75"h x 13.25"w x 7.5"d



FLEXVENT  
BACK PANEL

ENDORSED BY  
THE AMERICAN  
CHIROPRACTIC  
ASSOCIATION (ACA)



## NEW STALWART BACKPACK

Navigate your day efficiently from morning commute to evening gym session with this 26-liter backpack that has a large opening for quick-access to the main compartment. It also features an organizational panel and a 15" laptop padded sleeve to protect your gear, while keeping it accessible.

**NF0A52S6** \$60.00 (R)



TNF BLACK

MID GREY DARK  
HEATHER/TNF BLACK

TNF BLACK HEATHER/  
TNF BLUE

TIMBER TAN

### DETAILS

- The FlexVent™ suspension system with a flexible yoke built from custom injection-molded shoulder straps, an unbelievably comfortable, padded back panel; and a highly breathable lumbar panel
- Two webbing top handles for convenient opening and perfectly balanced carrying when the pack is by your side
- Pack stands on its own for easy loading and unloading
- Padded and protective 15" laptop sleeve in main compartment
- Huge main compartment holds all the must-haves for a day in the office or on campus
- Updated front compartment offers simplified organization and maintains essential features for storage such as secure-zip pockets, tablet sleeve and key fob
- 360-degree reflectivity enhances visibility while commuting
- Exterior daisy chains
- Two exterior water bottle pockets
- Sternum strap with whistle buckle
- Contrast embroidered The North Face logo on center top

### FABRIC

600D 50% recycled polyester with non-PFC durable water-repellent (non-PFC DWR) finish (Solids)  
300D heathered polyester with non-PFC durable water-repellent (non-PFC DWR) finish (Heathers)  
100% recycled trim

### DIMENSIONS

**AVERAGE WEIGHT:** 1 lb. 11 oz. (770 g)

**VOLUME:** 1587 in³ (26 liters)

**LAPTOP SLEEVE:** 11.5"h x 11"d

**DIMENSIONS:** 18"h x 11"w x 8"d



MEDIA  
COMPATIBLE



FLEXVENT  
BACK PANEL



## CONNECTOR BACKPACK

There's a place for everything you need in this versatile, all-utility 28-liter pack. This iconic design features a large main zip compartment with a floating, padded laptop sleeve and the front compartment features an interior organization panel to stash smaller items.

**NF0A3KX8** \$58.00 (R)



TNF BLACK/TNF WHITE



MID GREY DARK  
HEATHER/MID GREY



MONSTER BLUE/  
TNF BLACK



RAGE RED/  
ASPHALT GREY



TIBETAN ORANGE/  
ASPHALT GREY



### DETAILS

- The FlexVent™ suspension system boasts custom injection-molded shoulder straps and a padded mesh back panel with a spine channel for maximum support and ventilation
- Floating padded laptop sleeve in main compartment
- Secondary compartment has interior organization with a secure zippered pocket, Velcro® pocket and pen pockets
- Reflective bike-light loop, reflective water bottle tabs and reflective shoulder strap webbing create 360 degrees of reflectivity
- Two mesh water bottle pockets
- Comfortable, padded top haul handle
- Sternum strap with whistle buckle
- Contrast embroidered The North Face logo on front

### FABRIC

600D polyester, 1200D polyester, 450D x 300D heather polyester, 600D geo emboss polyester

### DIMENSIONS

**AVERAGE WEIGHT:** 1 lb. 15.39 oz. (890 g)

**VOLUME:** 1709 in³ (28 liters)

**LAPTOP SLEEVE:** 11.75"h x 12.25"d

**DIMENSIONS:** 19.3"h x 12.25"w x 7.5"d



FLEXVENT  
BACK PANEL

ENDORSED BY  
THE AMERICAN  
CHIROPRACTIC  
ASSOCIATION (ACA)

ENDORSED BY  
THE AMERICAN  
CHIROPRACTIC  
ASSOCIATION (ACA)





## AURORA II BACKPACK

Get your commute on with style and convenience carrying this backpack designed just for women. A wraparound zipper makes it easy to access the main compartment so you always have just what you need for work or class.

**NF0A3KXY** \$78.00 (R)



TNF BLACK HEATHER



TNF MEDIUM GREY HEATHER



### DETAILS

- The FlexVent™ suspension system boasts custom injection-molded shoulder straps and a padded mesh back panel with a spine channel for maximum support and ventilation
- Women-specific back panel and shoulder straps with a hideaway sternum strap and soft, breathable mesh
- Front stretch-mesh panel for quick access
- Hidden zippered side pocket
- Main compartment has a fleece-lined laptop/tablet sleeve
- Top fleece-lined zippered pocket for sunglasses or phone
- Stretch-mesh water bottle pocket
- Hidden lash points on front
- Contrast, high-density The North Face logo heat transfer on front

### FABRIC

300D polyester heather

### DIMENSIONS

**AVERAGE WEIGHT:** 1 lb. 5 oz. (595 g)

**VOLUME:** 1159 in<sup>3</sup> (19 liters)

**LAPTOP SLEEVE:** 10.5"h x 12"d

**DIMENSIONS:** 18"h x 12.5"w x 7.5"d



FLEXVENT  
BACK PANEL



ENDORSED BY  
THE AMERICAN  
CHIROPRACTIC  
ASSOCIATION (ACA)



## APEX DUFFEL

No matter where you're training, this roomy 31.5-liter duffel has the space and features to keep all your workout gear organized. Use the two main zippered compartments to keep your sweaty clothes separate from your fresh clothes.

**NF0A3KXX** \$58.00 (R)



ASPHALT GREY/TNF BLACK



TNF BLACK



MONSTER BLUE/BLACK

### DETAILS

- Two main zippered compartments: one for clean clothes, the other with a breathable mesh top for dirty clothes and shoes
- Exterior fleece-lined zippered pocket is perfect for keys, headphones, ID and more
- Interior slip pocket for music player or smartphone
- Duffel handles and removable cross-body shoulder strap
- Coated material on base for added durability
- Contrast, high-density The North Face logo heat transfer on front

### FABRIC

420D nylon, 900D polyester with TPE PVC coating

### DIMENSIONS

**AVERAGE WEIGHT:** 1 lb. 9 oz. (705 g)

**VOLUME:** 1922 in<sup>3</sup> (31.5 liters)

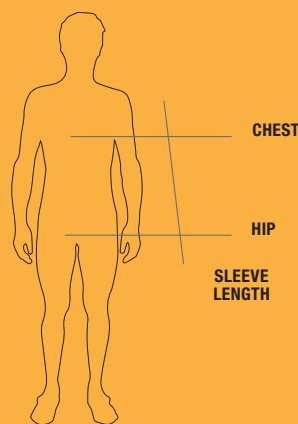
**DIMENSIONS:** 15"h x 20"w x 9"d





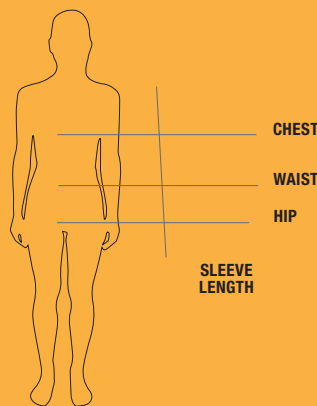
# FIND YOUR SIZE & YOUR STYLE

## ADULT



|     | CHEST                 | HIP                   | SLEEVE LENGTH   |
|-----|-----------------------|-----------------------|-----------------|
| S   | 36-38 in / 91-96 cm   | 35-37 in / 88-93 cm   | 33.5 in / 85 cm |
| M   | 39-41 in / 91-104 cm  | 38-40 in / 96-101 cm  | 34 in / 86 cm   |
| L   | 42-44 in / 106-111 cm | 41-43 in / 104-109 cm | 34.8 in / 88 cm |
| XL  | 45-48 in / 114-121 cm | 44-46 in / 111-116 cm | 35.5 in / 90 cm |
| 2XL | 49-52 in / 124-132 cm | 47-49 in / 119-124 cm | 36.3 in / 92 cm |
| 3XL | 53-56 in / 134-142 cm | 50-52 in / 127-132 cm | 37 in / 94 cm   |

## LADIES



|     | CHEST                 | WAIST                | HIP                   | SLEEVE LENGTH   |
|-----|-----------------------|----------------------|-----------------------|-----------------|
| S   | 33-35 in / 83-88 cm   | 26-28 in / 66-71 cm  | 36-37 in / 91-93 cm   | 32 in / 86 cm   |
| M   | 36-38 in / 91-96 cm   | 29-31 in / 73-78 cm  | 38-40 in / 96-101 cm  | 32.5 in / 88 cm |
| L   | 39-41 in / 96-104 cm  | 32-34 in / 81-86 cm  | 41-43 in / 104-109 cm | 33.3 in / 90 cm |
| XL  | 42-44 in / 106-111 cm | 35-38 in / 88-96 cm  | 44-47 in / 111-119 cm | 34 in / 92 cm   |
| 2XL | 45-48 in / 114-121 cm | 39-42 in / 99-106 cm | 48-51 in / 121-129 cm | 34.8 in / 94 cm |





| STYLE    | NAME  | PRICE        | PAGE |
|----------|---|--------------|------|
| NF0A3KX5 | The North Face Generator Backpack                           | \$93.00 (R)  | 61   |
| NF0A3KX6 | The North Face Groundwork Backpack                          | \$68.00 (R)  | 65   |
| NF0A3KX7 | The North Face Fall Line Backpack                           | \$93.00 (R)  | 62   |
| NF0A3KX8 | The North Face Connector Backpack                           | \$58.00 (R)  | 67   |
| NF0A3KXX | The North Face Apex Duffel                                  | \$58.00 (R)  | 69   |
| NF0A3KXY | The North Face Aurora II Backpack                           | \$78.00 (R)  | 68   |
| NF0A3LGT | The North Face Apex Barrier Soft Shell Jacket               | \$155.00 (R) | 31   |
| NF0A3LGU | The North Face Ladies Apex Barrier Soft Shell Jacket        | \$155.00 (R) | 31   |
| NF0A3LGV | The North Face Tech Stretch Soft Shell Jacket               | \$105.00 (R) | 36   |
| NF0A3LGW | The North Face Ladies Tech Stretch Soft Shell Jacket        | \$105.00 (R) | 36   |
| NF0A3LGX | The North Face Ridgewall Soft Shell Jacket                  | \$105.00 (R) | 32   |
| NF0A3LGY | The North Face Ladies Ridgewall Soft Shell Jacket           | \$105.00 (R) | 32   |
| NF0A3LGZ | The North Face Ridgewall Soft Shell Vest                    | \$85.00 (R)  | 34   |
| NF0A3LH1 | The North Face Ladies Ridgewall Soft Shell Vest             | \$85.00 (R)  | 34   |
| NF0A3LH2 | The North Face ThermoBall Trekker Jacket                    | \$199.00 (R) | 9    |
| NF0A3LH4 | The North Face DryVent Rain Jacket                          | \$105.00 (R) | 22   |
| NF0A3LH5 | The North Face Ladies DryVent Rain Jacket                   | \$105.00 (R) | 22   |
| NF0A3LH6 | The North Face Far North Fleece Jacket                      | \$135.00 (R) | 39   |
| NF0A3LH7 | The North Face Sweater Fleece Jacket                        | \$95.00 (R)  | 40   |
| NF0A3LH8 | The North Face Ladies Sweater Fleece Jacket                 | \$95.00 (R)  | 40   |
| NF0A3LH9 | The North Face Canyon Flats Fleece Jacket                   | \$80.00 (R)  | 48   |
| NF0A3LHA | The North Face Ladies Canyon Flats Stretch Fleece Jacket    | \$80.00 (R)  | 51   |
| NF0A3LHB | The North Face Tech 1/4-Zip Fleece                          | \$60.00 (R)  | 54   |
| NF0A3LHC | The North Face Ladies Tech 1/4-Zip Fleece                   | \$60.00 (R)  | 54   |
| NF0A3LHD | The North Face ThermoBall Trekker Vest                      | \$149.00 (R) | 11   |
| NF0A3LHH | The North Face Canyon Flats Fleece Hooded Jacket            | \$90.00 (R)  | 49   |
| NF0A3LHK | The North Face Ladies ThermoBall Trekker Jacket             | \$199.00 (R) | 9    |
| NF0A3LHL | The North Face Ladies ThermoBall Trekker Vest               | \$149.00 (R) | 11   |
| NF0A3SEF | The North Face Ladies Canyon Flats Stretch Poncho           | \$99.00 (R)  | 50   |
| NF0A3SES | The North Face Ascendent Insulated Jacket                   | \$225.00 (R) | 14   |
| NF0A3SEV | The North Face Ladies Tech Full-Zip Fleece Jacket           | \$80.00 (R)  | 53   |
| NF0A3SEW | The North Face Tech Full-Zip Fleece Jacket                  | \$80.00 (R)  | 53   |
| NF0A3VHR | The North Face Traverse Triclimate 3-In-1 Jacket            | \$250.00 (R) | 13   |
| NF0A47F5 | The North Face Skyline Full-Zip Fleece Jacket               | \$85.00 (R)  | 43   |
| NF0A47F6 | The North Face Ladies Skyline Full-Zip Fleece Jacket        | \$85.00 (R)  | 43   |
| NF0A47F7 | The North Face Skyline 1/2-Zip Fleece Jacket                | \$75.00 (R)  | 42   |
| NF0A47F8 | The North Face High Loft Fleece Jacket                      | \$95.00 (R)  | 38   |
| NF0A47F9 | The North Face Ladies High Loft Fleece Jacket               | \$95.00 (R)  | 38   |
| NF0A47FA | The North Face Sweater Fleece Vest                          | \$85.00 (R)  | 41   |
| NF0A47FB | The North Face Mountain Peaks 1/4-Zip Fleece Jacket         | \$75.00 (R)  | 47   |
| NF0A47FC | The North Face Ladies Mountain Peaks 1/4-Zip Fleece Jacket  | \$75.00 (R)  | 47   |
| NF0A47FD | The North Face Mountain Peaks Full-Zip Fleece Jacket        | \$85.00 (R)  | 45   |
| NF0A47FE | The North Face Ladies Mountain Peaks Full-Zip Fleece Jacket | \$85.00 (R)  | 45   |
| NF0A47FF | The North Face Pullover Hoodie                              | \$55.00 (R)  | 56   |
| NF0A47FG | The North Face All-Weather DryVent Stretch Jacket           | \$125.00 (R) | 21   |
| NF0A47FH | The North Face Ladies All-Weather DryVent Stretch Jacket    | \$125.00 (R) | 21   |
| NF0A47FI | The North Face Apex DryVent Jacket                          | \$210.00 (R) | 16   |
| NF0A47FJ | The North Face Ladies Apex DryVent Jacket                   | \$210.00 (R) | 16   |
| NF0A47FK | The North Face ThermoBall ECO Shirt Jacket                  | \$149.00 (R) | 10   |

| NEW STYLES | NAME  | PRICE        | PAGE |
|------------|---|--------------|------|
| NF0A4VU9   | The North Face Classic Cap                          | \$18.00 (R)  | 59   |
| NF0A4VUA   | The North Face Ultimate Trucker Cap                 | \$18.00 (R)  | 59   |
| NF0A4VUB   | The North Face Mountain Beanie                      | \$16.00 (R)  | 58   |
| NF0A529A   | The North Face Everyday Insulated Vest              | \$109.00 (R) | 7    |
| NF0A529K   | The North Face Everyday Insulated Jacket            | \$139.00 (R) | 5    |
| NF0A529L   | The North Face Ladies Everyday Insulated Jacket     | \$139.00 (R) | 5    |
| NF0A529O   | The North Face Ladies City Trench                   | \$180.00 (R) | 19   |
| NF0A529P   | The North Face City Parka                           | \$180.00 (R) | 19   |
| NF0A529Q   | The North Face Ladies Everyday Insulated Vest       | \$109.00 (R) | 7    |
| NF0A529R   | The North Face Castle Rock Hooded Soft Shell Jacket | \$135.00 (R) | 25   |
| NF0A52S6   | The North Face Stalwart Backpack                    | \$60.00 (R)  | 66   |
| NF0A52S7   | The North Face Dyno Backpack                        | \$80.00 (R)  | 63   |
| NF0A52S8   | The North Face Crestone Backpack                    | \$70.00 (R)  | 64   |
| NF0A552Z   | The North Face Castle Rock Soft Shell Jacket        | \$120.00 (R) | 26   |
| NF0A5541   | The North Face Ladies Castle Rock Soft Shell Jacket | \$120.00 (R) | 26   |
| NF0A5542   | The North Face Castle Rock Soft Shell Vest          | \$99.00 (R)  | 28   |
| NF0A5543   | The North Face Ladies Castle Rock Soft Shell Vest   | \$99.00 (R)  | 28   |





NEVER  
STOP  
EXPLORING®

THE  
NORTH  
FACE